

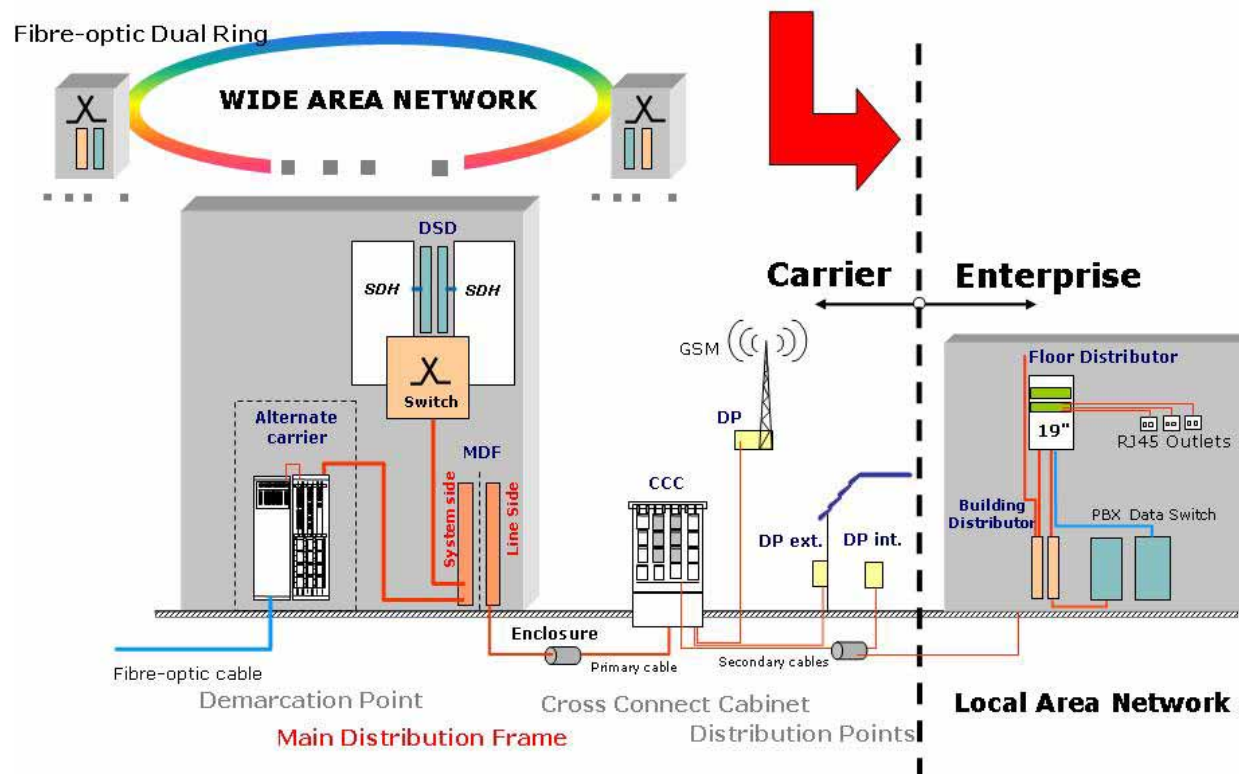


# Main Distribution Frames



# Main Distribution Frames

- A Main Distribution Frame (MDF) is the interface between  
The subscriber cables coming from the local network (line side)  
and the switching equipment in the exchange (system side)



# Main Distribution Frames



Different criteria need to be taken into account when planning a **new** MDF

1. Room dimensions
2. Position/environment
3. Capacity
4. Jumper volume
5. MDF configuration
6. Module types
7. Delivery conditions

# Main Distribution Frames

## 1. Enough space ?

Room dimensions: Height, Width, Depth

## 2. Position/environment

Room constitution (e.g. computer/raised floor)

Air conditioning ?

Layout of the switching equipment position

Free selection or given ?



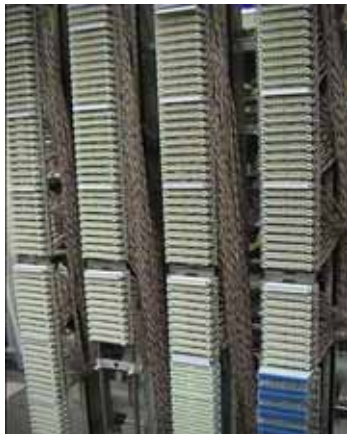
# Main Distribution Frames

## 3. Needed capacity on both line side and system side

Typically ratio of 1 : 1.2/1.5 (system/line side)

## 4. Sufficient total jumpering volume

Typically jumper diameter 0.6 ... 0.9 mm



# Main Distribution Frames

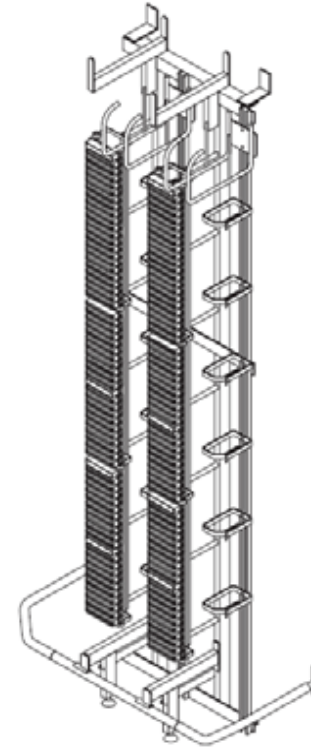
## 5. MDF configured as

Wall-secured

(Line and system side vertical)

Free-standing single-sided

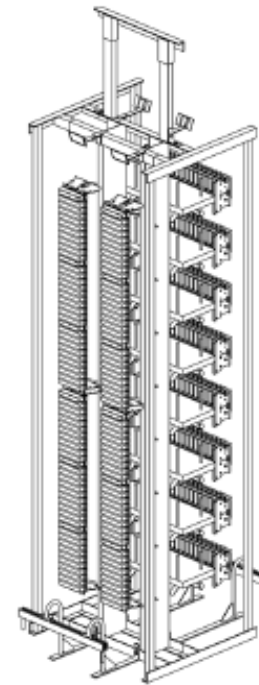
(Line and system side vertical)



# Main Distribution Frames

Free-standing double-sided  
(Line and system side vertical)

Free-standing double-sided  
(Line side vertical, system side horizontal)



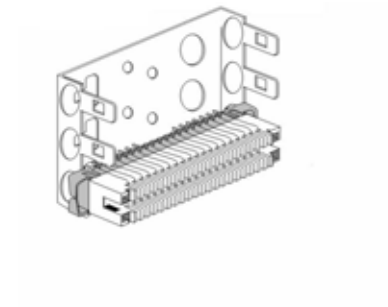
# Main Distribution Frames

## 6. MDF prepared for

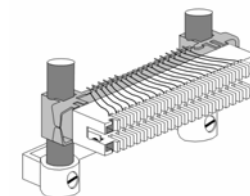
» System MDF 71



» LSA-PLUS® Series 2



» LSA PROFIL®





# Main Distribution Frames

## 7. Delivery conditions

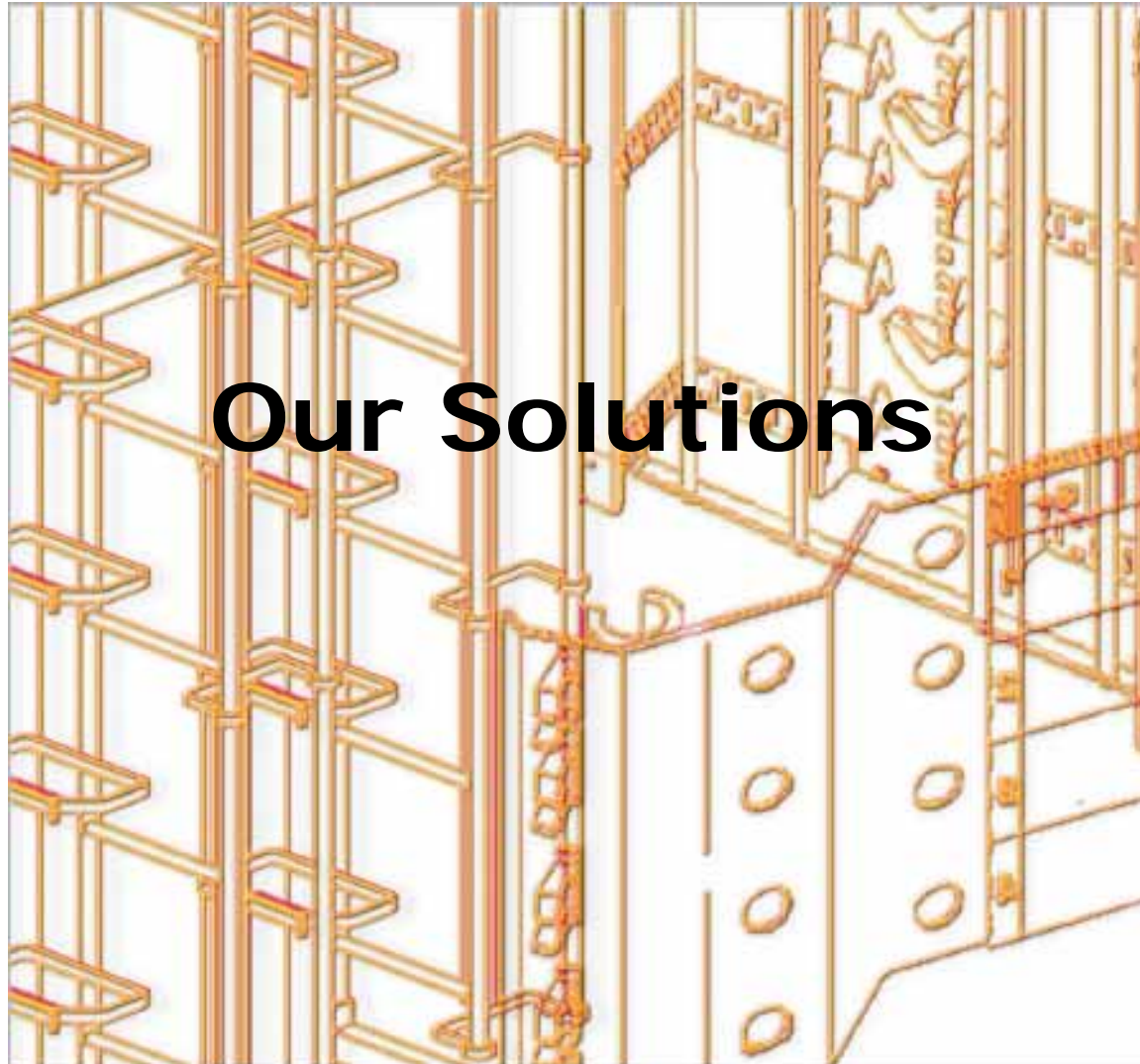
» Unassembled



» Pre-assembled



# Main Distribution Frames

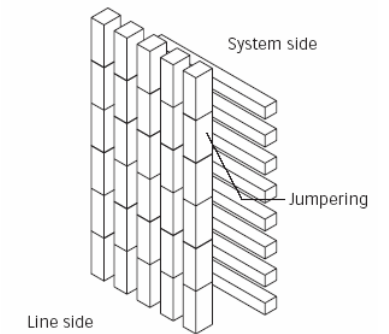


# Main Distribution Frames

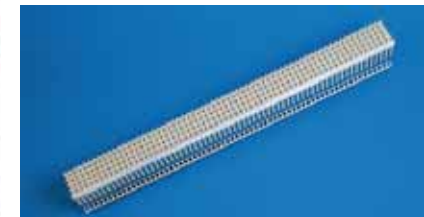
– MDF 71



Vertical (line side)



Horizontal (system side)



# Main Distribution Frames



- MDF 71
- Features:
  - » Connectivity: System 71
  - » Design: Vertical/horizontal
  - » Horizontal jumpering capacity: 39.000 pairs
  - » Room height: 2.730 – 4.300 mm
  - » Configuration: Free-standing, double-sided
  - » Delivery conditions: Unassembled
- Advantages:
  - » Distributor for large and medium capacity
  - » Different sizes available
  - » Modular design = completely adaptable to given space requirement

# Main Distribution Frames

## MDF 71 – additional solutions

DSL (Single-pair splitter)



xDSL (PCM blocks)



PROTECTION (Basic protection magazine)



# Main Distribution Frames

- Accessories

Insertion tool:



Disconnection plug, 2-pole:



Magazine extractor:



Marking cap:



Contact insert extractor:



Dummy plug:



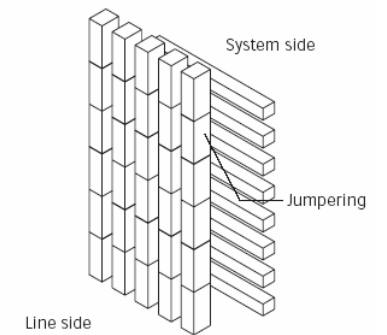
Test- and patch cords



# Main Distribution Frames



– MDF 80



Horizontal side  
Exchange side

Vertical side  
Line side



# Main Distribution Frames

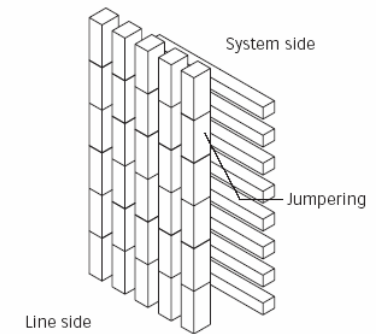
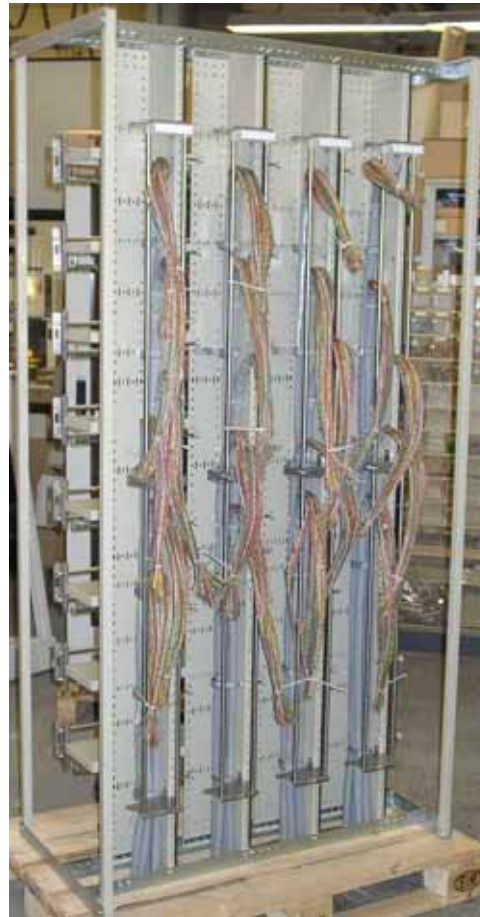


- MDF 80 (Back mount frame)
- Features:
  - » Connectivity: LSA-PLUS® Series 2
  - » Design: Vertical/horizontal
  - » Horizontal jumpering capacity: 33.000 pairs
  - » Room height: 2.200 – 4.400 mm
  - » Configuration: Free-standing, double-sided
  - » Delivery conditions: Unassembled
- Advantages:
  - » Distributor for large and medium capacity
  - » Different sizes available
  - » Modular design = completely adaptable to given space requirement



# Main Distribution Frames

– MDF COM 80-2



Horizontal (system side)



Vertical (line side)



# Main Distribution Frames



- MDF COM 80-2 (Profile rod mounting)
- Features:
  - » Connectivity: LSA PROFIL® Series 2
  - » Design: Vertical/horizontal
  - » Horizontal jumpering capacity: 12.000 pairs
  - » Room height: 2.400 – 3.220 mm
  - » Configuration: Free-standing, double-sided
  - » Delivery conditions: Unassembled
- Advantages: Distributor for medium capacity  
Available in 2 different sizes

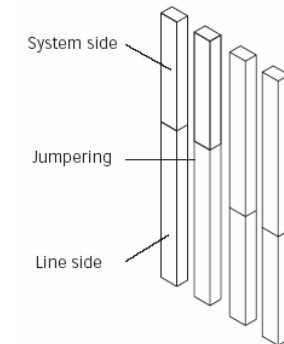
# Main Distribution Frames

– MDF 91m

Vertical (system side)



Vertical (line side)



# Main Distribution Frames



- MDF 91m (Flexible mounting options)
- Features:
  - » Connectivity: LSA PROFIL® Series 2 or Series 71
  - » Design: Vertical
  - » Horizontal jumpering capacity: 4.000 pairs
  - » Room height: 2.100 – 3.800 mm
  - » Configuration: Wall-mounted or  
Free standing (single or double-sided)
  - » Delivery conditions: Pre-assembled
- Advantages:
  - Reduction of installation time by 75%  
For all LSA modules
  - Available in 3 different sizes

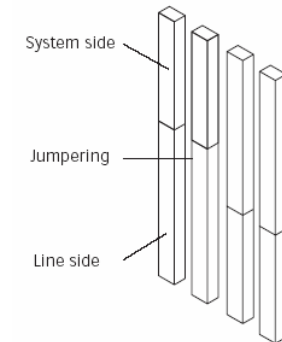
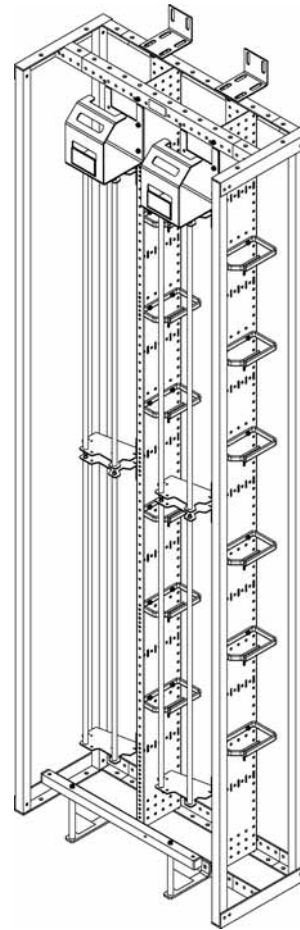
# Main Distribution Frames

## – MDF COM 91-2

Vertical (system side)



Vertical (line side)



# Main Distribution Frames



- MDF COM 91-2 (Profil rod mounting)
- Features:
  - » Connectivity: LSA PROFIL® Series 2
  - » Design: Vertical
  - » Horizontal jumpering capacity: 4.000 pairs
  - » Room height: 2.400 – 3.220 mm
  - » Configuration: Wall-mounted or  
Free-standing (single or double-sided)
  - » Delivery conditions: Pre-assembled
- Advantages: Reduction of installation time by 75%

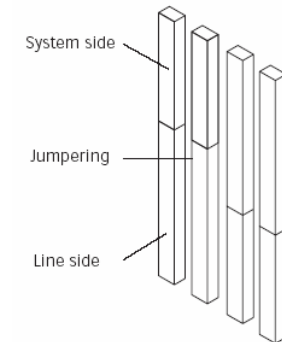
# Main Distribution Frames

## – MDF 108 P

Vertical (system side)



Vertical (line side)



# Main Distribution Frames



- MDF 108 P (Profil rod mounting)
- Features:
  - » Connectivity: LSA PROFIL® Series 2
  - » Design: Vertical
  - » Horizontal jumpering capacity: 10.000 pairs
  - » Room height: 2.000 – 3.200 mm
  - » Configuration: Wall-mounted or  
Free-standing (single or double-sided)
  - » Delivery conditions: Pre-assembled
- Advantages: Reduction of installation time by 75%



# Main Distribution Frames

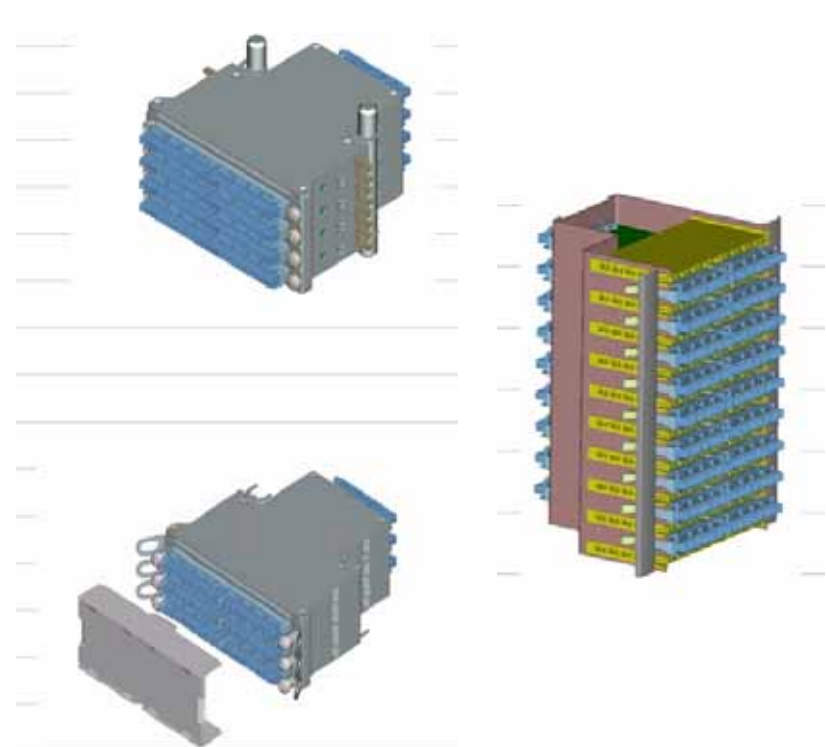
## LSA-PLUS® – Additional solutions

DSL

(Single-pair splitter)



Splitter blocks



# Main Distribution Frames

## LSA-PLUS<sup>®</sup> – Additional solutions

### PROTECTION

Basic protection magazines

Single protection plugs



# Main Distribution Frames

## LSA-PLUS® - Accessories

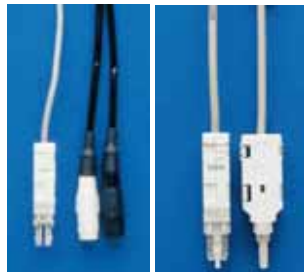
Label holder,  
Marking caps,  
Disconnection plugs,  
Dummy plugs,  
Cover strips



Insertion tool:



Test- and patch cords



# Main Distribution Frames



	MDF 71	MDF 80	COM 80-2	91 M	COM 91-2	108 P
<b>Connectivity</b>	71	LSA-PLUS	LSA PROFIL	LSA-PLUS 71 LSA PROFIL	LSA PROFIL	LSA PROFIL
<b>Design</b>	Vertical/horizontal			Vertical		
<b>Horizontal jumping capacity</b>	39.000 pairs	33.000 pairs	12.000 pairs	4.000 pairs	3.200 pairs	10.000 pairs
<b>Room height (mm)</b>	2.730-4.300	2.200 - 4.400	2.400 - 3.220	2.100 - 3.800	2.400 - 3.220	2.000 - 3.220
<b>Configuration:</b>						
Wall-mounted				■		
Free-standing/single				■		
Free-standing/double	■					
<b>Delivery conditions</b>	unassembled			Pre-assembled		

# Main Distribution Frames



**Thank you for your attention!**